

Flash 4M BIOS SOP(uEFI)

Document: SOP

Issue Date: 09/30/2011

Document Revision: v1.0

	APPROVED	CHECKED	PREPARED
BY	Allen Chen	Cookie Xiao	Iris Zou
DATE	09/30/2011	09/30/2011	09/30/2011

This document contains proprietary and confidential information of Foxconn. All rights and titles hereto remain with Foxconn. The recipient shall keep this document in strict confidence and shall use this document in the manner and solely for purposes expressly agreed to by Foxconn. The recipient shall not disclose or allow access to this document, in whole or in part, by third parties, nor use it for the benefit of the recipient or third parties. The recipient shall not change this document in form and substance by any means, including without limitation, decompile, reproduce, revise, and amend.

[illegible]

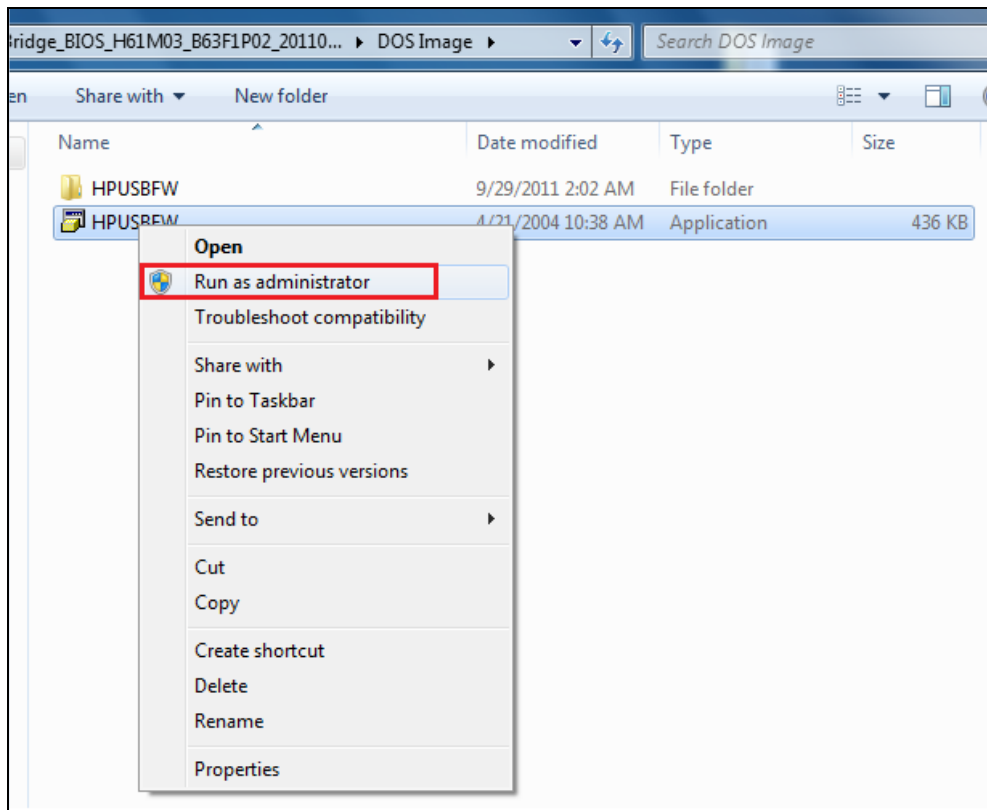
Catalogue

Flash 4M ME Firmware under DOS:	4
--	----------

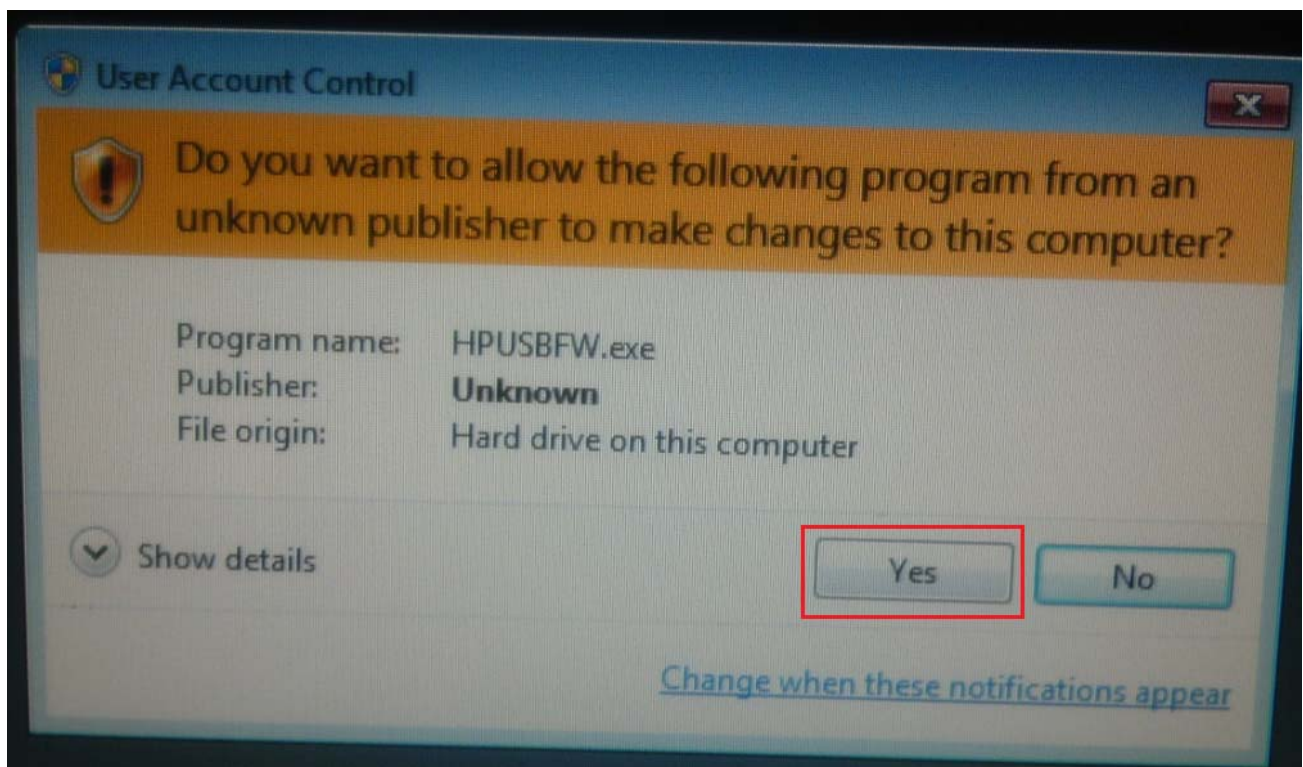
Flash 4M ME Firmware under DOS:

1. Make a DOS bootable device.

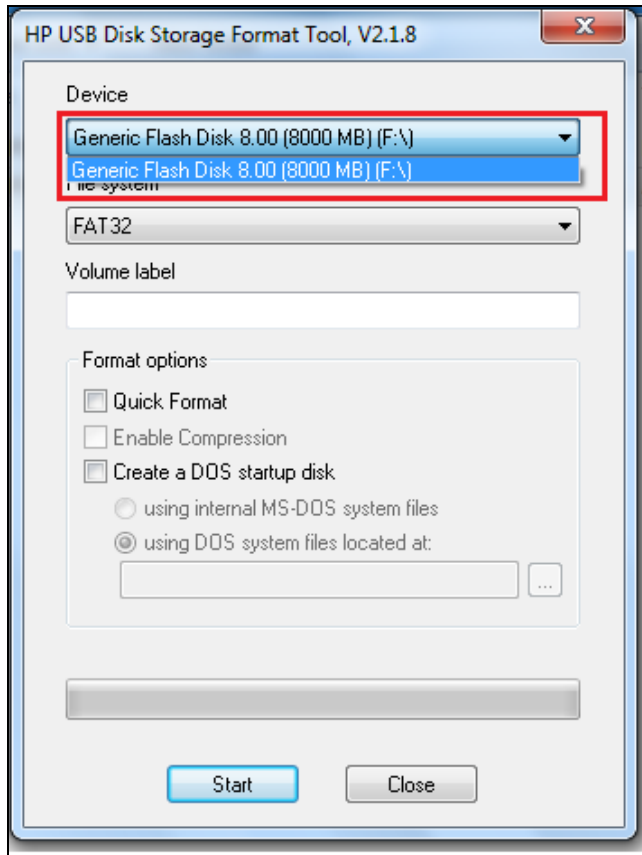
1.1、Run [DOS Image](#)→[HPUSBFW.exe](#) as Administrator。



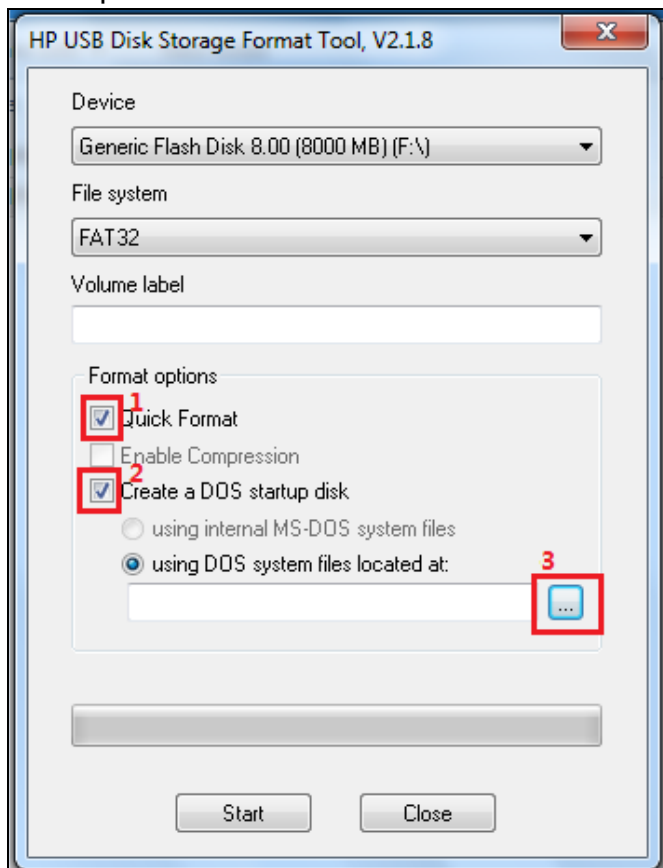
Click “Yes”.



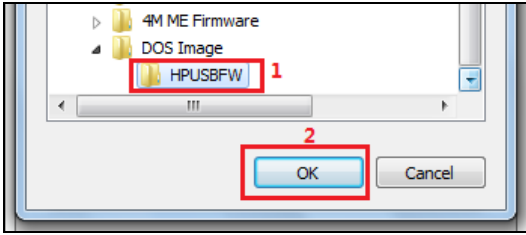
1.2、 Select the device which you want to make a DOS bootable device in “Device” option.



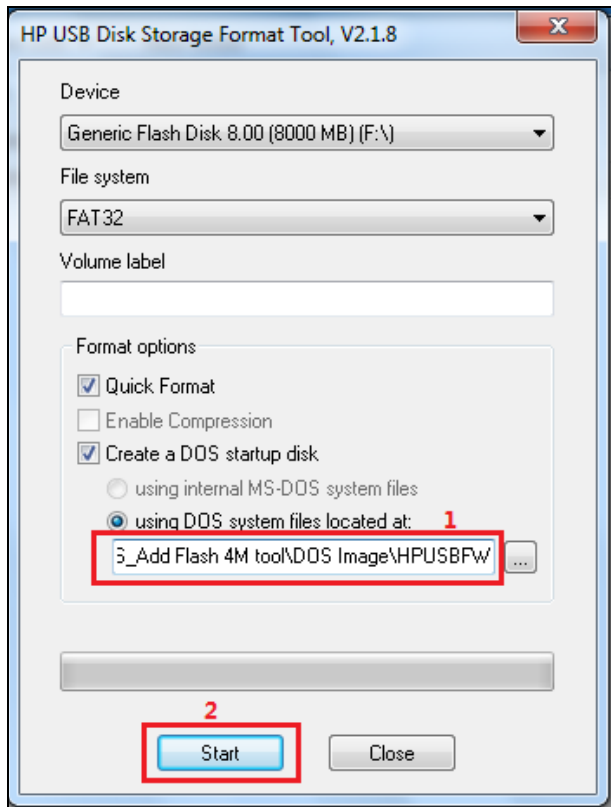
1.3、 Select “Quick Format” and “Create a DOS startup disk” option and click Option 3 as below picture.



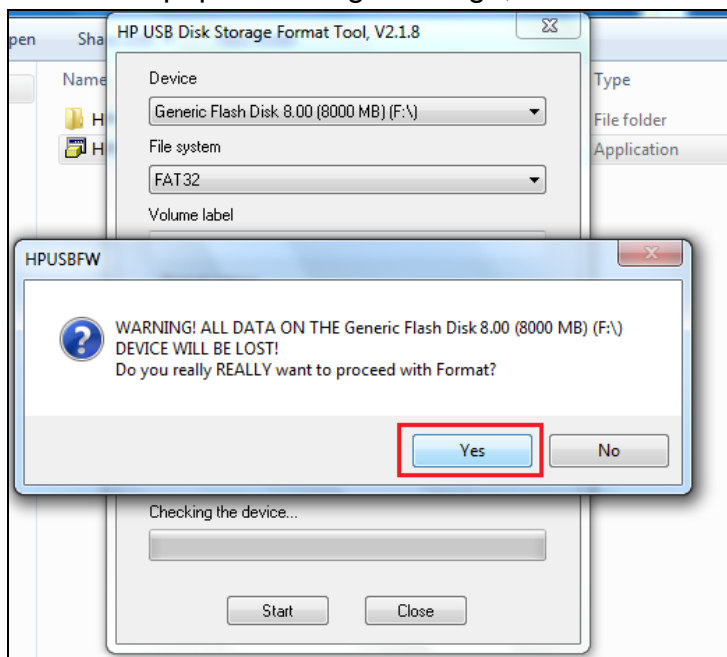
1.4、Choose the **HPUSBFW** folder the pop frame.



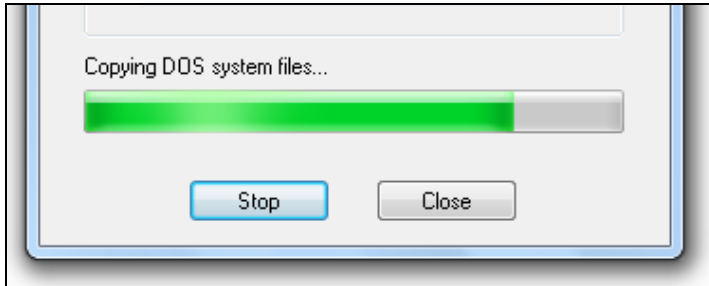
1.5、Make sure have choose the **HPUSBFW** folder and click “**Start**” to make a bootable device.



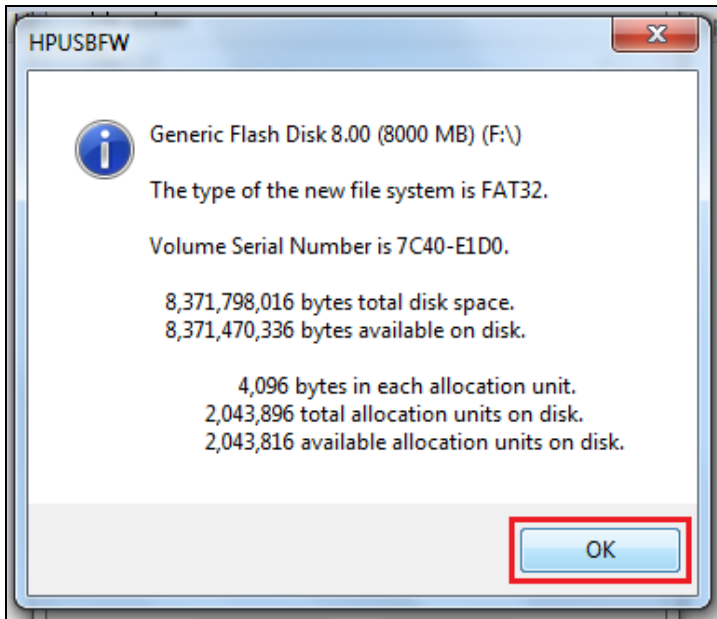
1.6、It will pop a warning message, click “**Yes**” if make sure all setting are right.



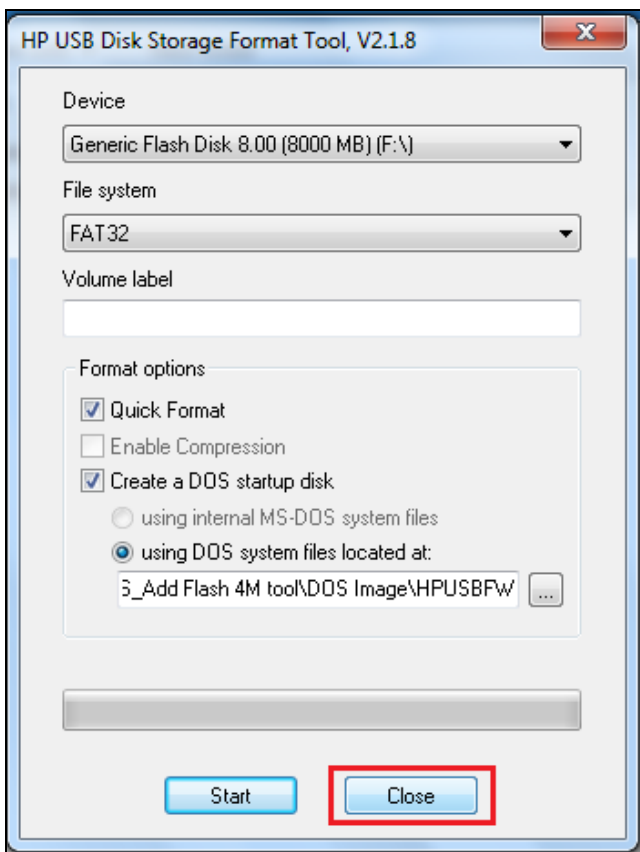
1.7、Creating bootable device



1.8、Click "OK".



1.9、Click "Close" button to exit this frame

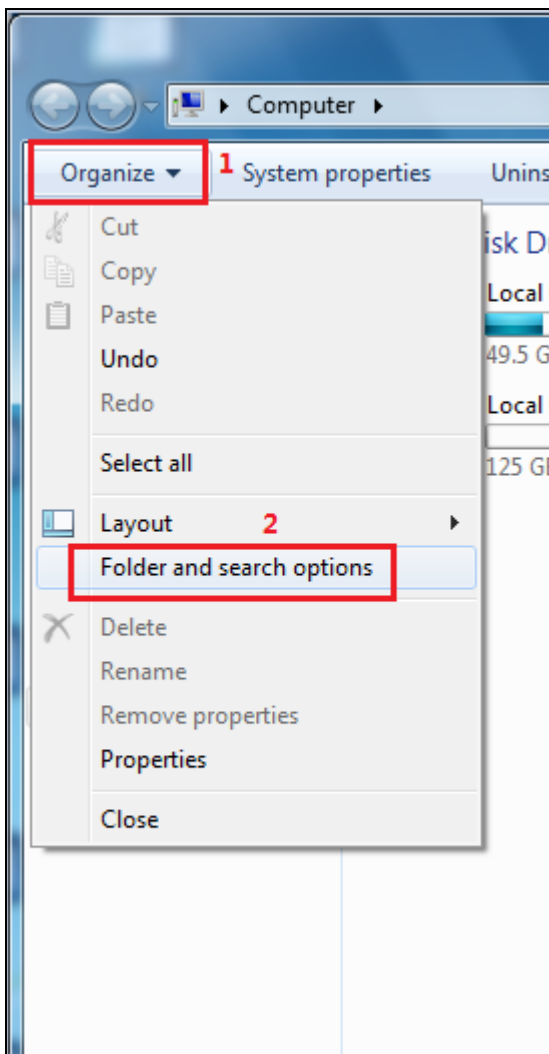


1.10、It will create three files if the bootable device is OK.

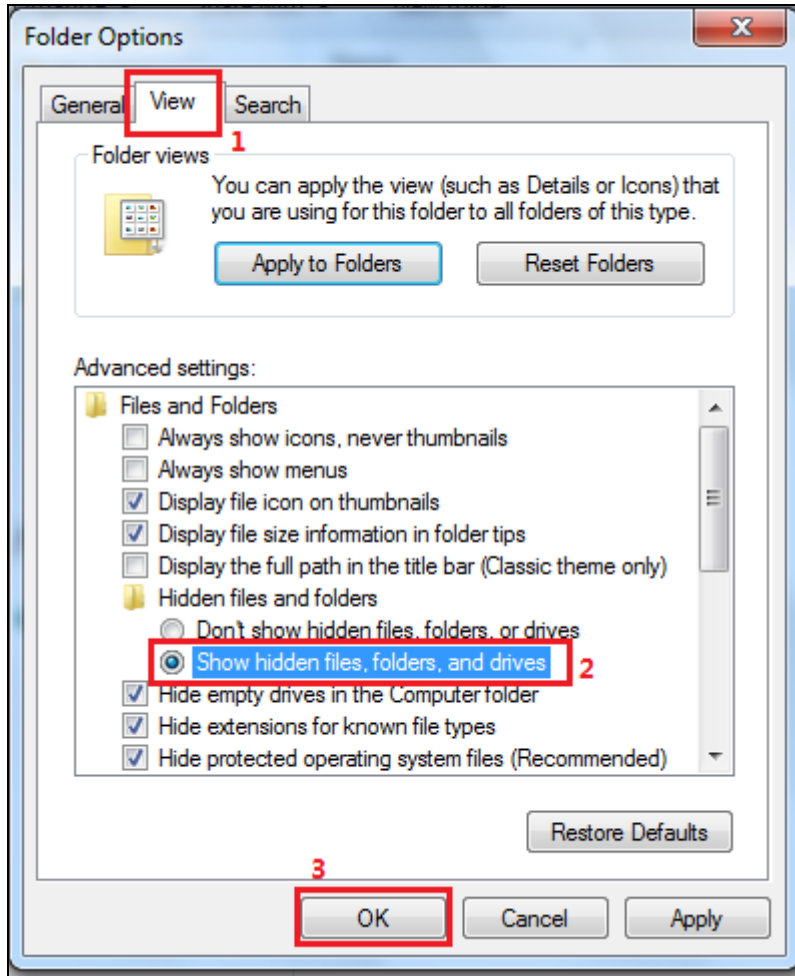


Note: These three files are hidden files. Please show hidden files with correct settings. If the OS is Windows7, please follow step 1.11&1.12

1.11、Open “Computer”, select “Organize”→ “Folder and search options”.



1.12、Select “View”→“Show hidden files, folders, and drives”, and then click “OK” button.



2、Copy these files to the bootable device in 4M ME Firmware(include BIOS folder, AUTOEXEC.bat、FBSHUT.COM、XDDMI.EXE)

Note: If you can't see the AUTOEXEC.bat file, please refer step 1.12 and 1.13.

BIOS	2011/8/25 14:06
AUTOEXEC.bat	2011/8/16 15:06
COMMAND.COM	1999/4/23 22:22
FBSHUT.COM	2008/3/12 09:13
IO.SYS	1999/4/23 22:22
MSDOS.SYS	1999/4/23 22:22
XDDMI.EXE	2011/8/16 09:47

3、Disabled ME on the Motherboard by ME jumper.



4、Plug the bootable device, power on the machine and boot from the bootable device. It will auto-flash BIOS under DOS. After finish flash BIOS, it will auto-reboot.

```
Starting Windows 98...

A:\>
Check the previous Mother Board's UUID backup file...
Start to backup Mother Board's UUID...
Backup UUID successful...
Start to flash BIOS...
Bad command or file name

Intel (R) Flash Programming Tool. Version: 7.0.4.1197
Copyright (c) 2007-2010, Intel Corporation. All rights reserved.

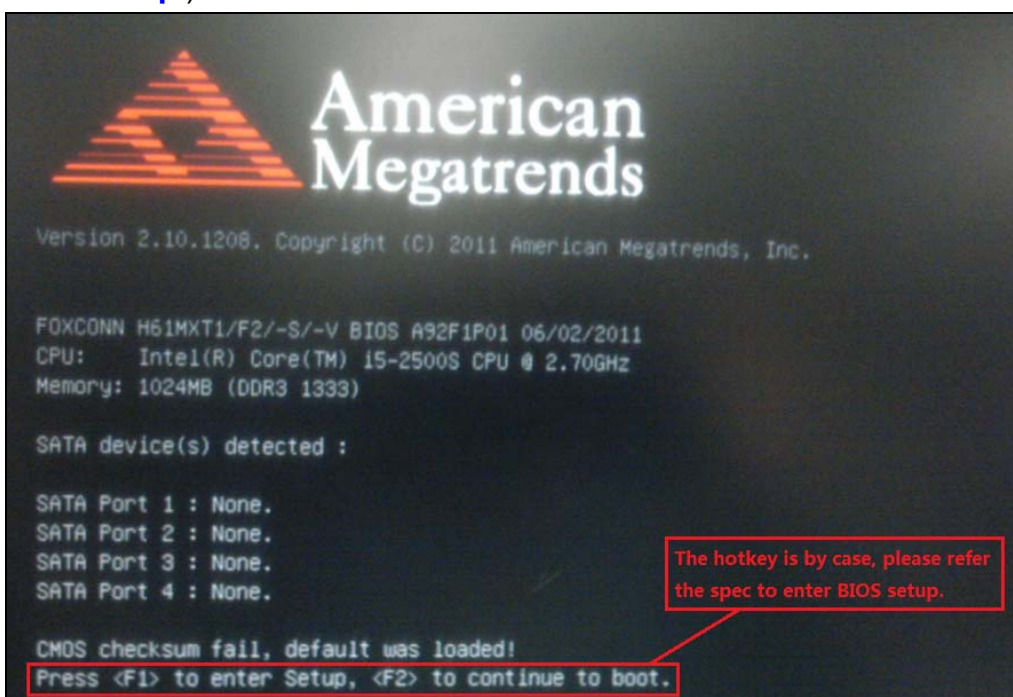
Platform: Intel(R) H61 Express Chipset Revision: B2
Reading HSFSTS register... Flash Descriptor: Valid

--- Flash Devices Found ---
MX25L3205A(D)   ID:0xC22016   Size: 4096KB (32768Kb)

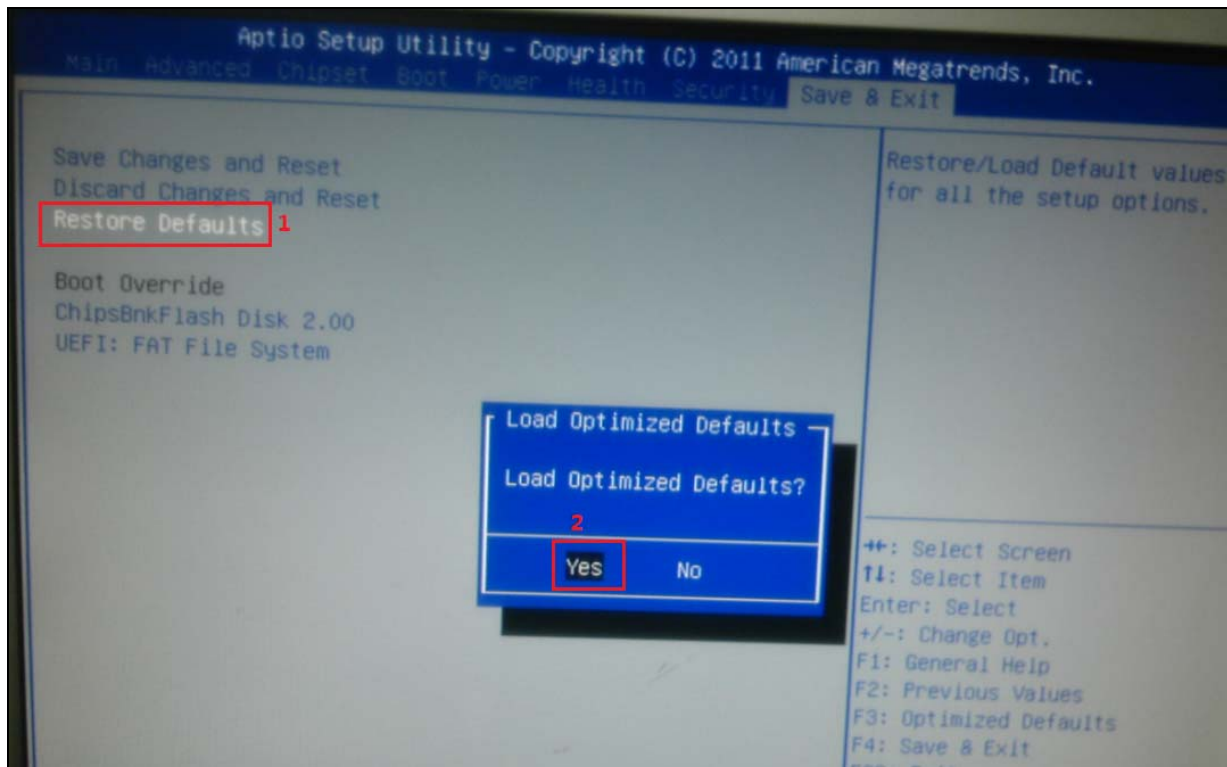
PDR Region does not exist.
- Erasing Flash Block [0x400000] - 100% complete.
- Programming Flash [0x050000] 320KB of 4096KB - 8% complete.
```

5、Enter BIOS setup, Load default.

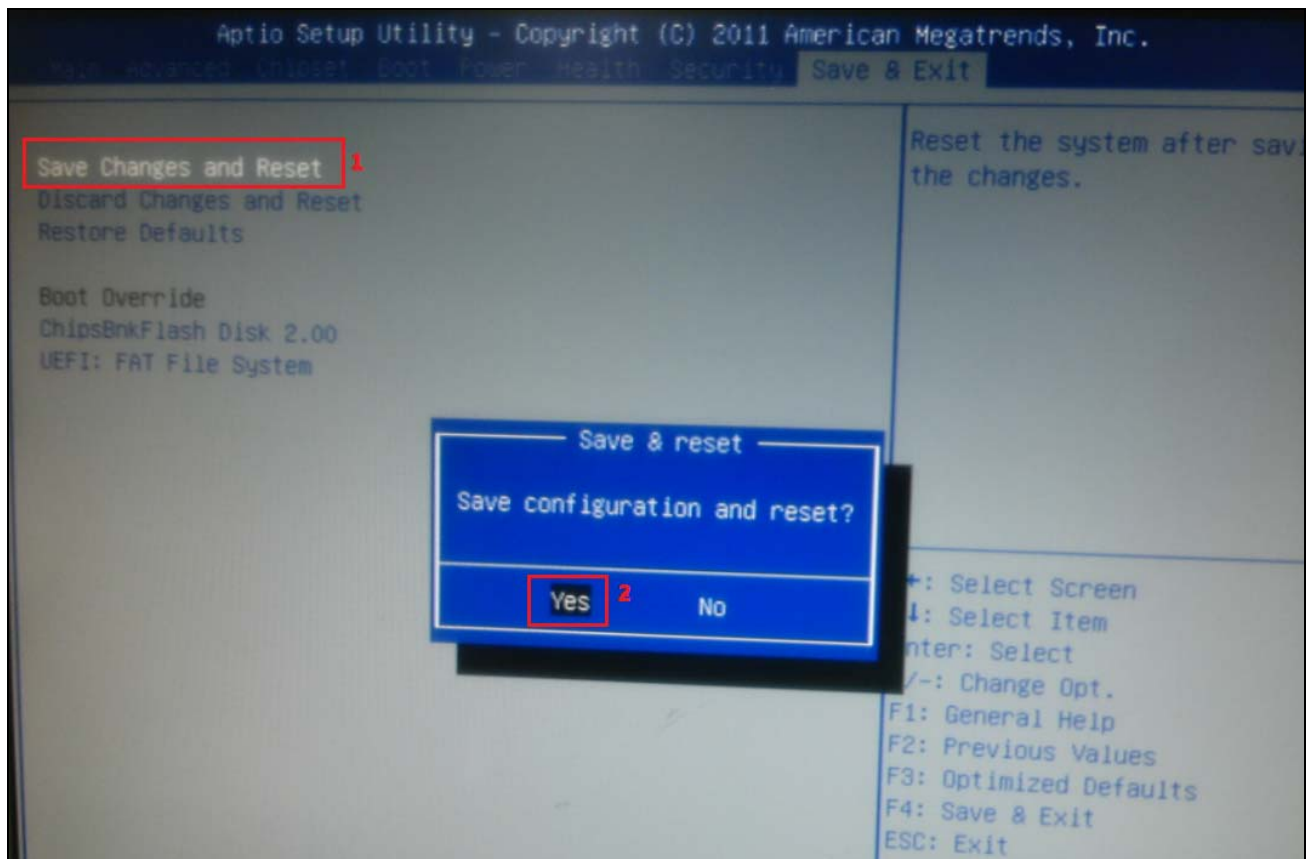
5.1、Press “F1” enter BIOS setup.(The hotkey is by case, please refer the spec to enter BIOS setup.)



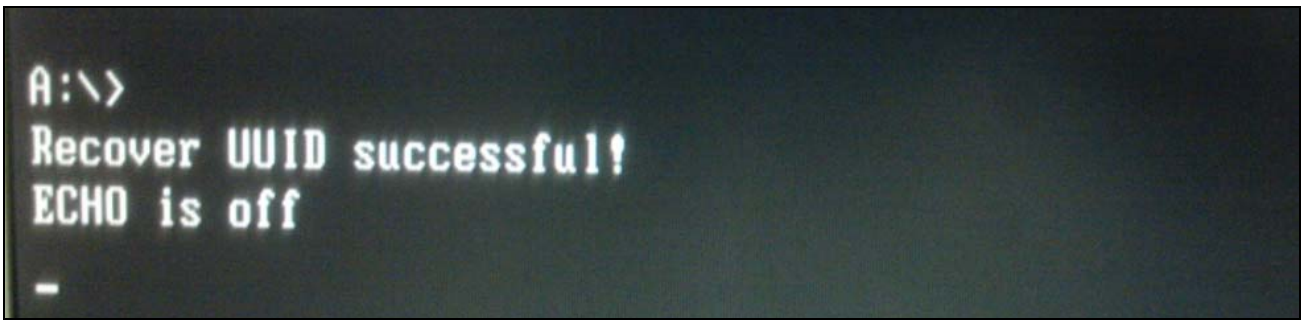
5.2、 Select “Restore defaults” item in Save & Exit. Press “Enter” key, select “Yes”.



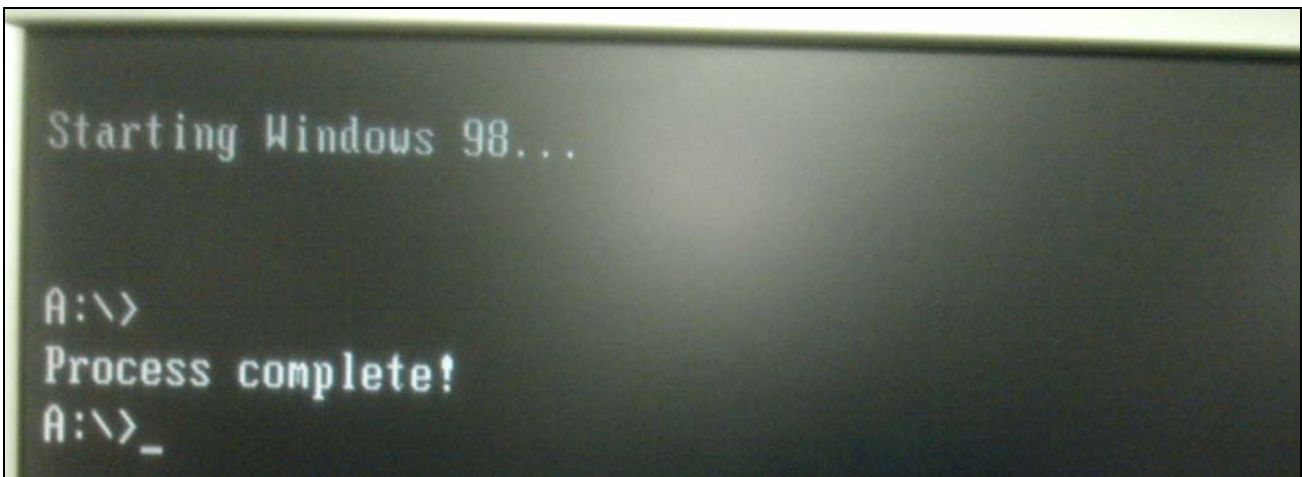
5.3、 Select “Save Changes and Reset” item in Save & Exit. Press “Enter” key, select “Yes”.



6、 Save and exit, and then boot to DOS with the bootable device. It will pop below message after reboot. **The process is so quickly, and you may not capture the message.**



7、 Boot to DOS, it will show Process Complete.



8、 Shutdown the machine, Enabled ME on the Motherboard by ME jumper. Finished that flash 4M ME Firmware.

